

CANTRELL WORLDWIDE INC.

2154 CHENAULT DRIVE ● BUILDING A ● CARROLLTON ● TEXAS ● 75006
PHONE: 972-302-2557 ● FAX: 214-279-0855
WWW.CANTRELLWORLDWIDE.COM

NEW... 7 STAGE LINT CLEANER

Utilizing 'Laminar Flow' cleaning, for the highest recovery of quality lint in the industry.

Extra large capacity reclaim section for high secondary lint recovery.

All beater screens mounted in new 'Track Screen' design for quick change and ease of maintenance.

Clean rugged design with heavy structural construction for smooth operation.

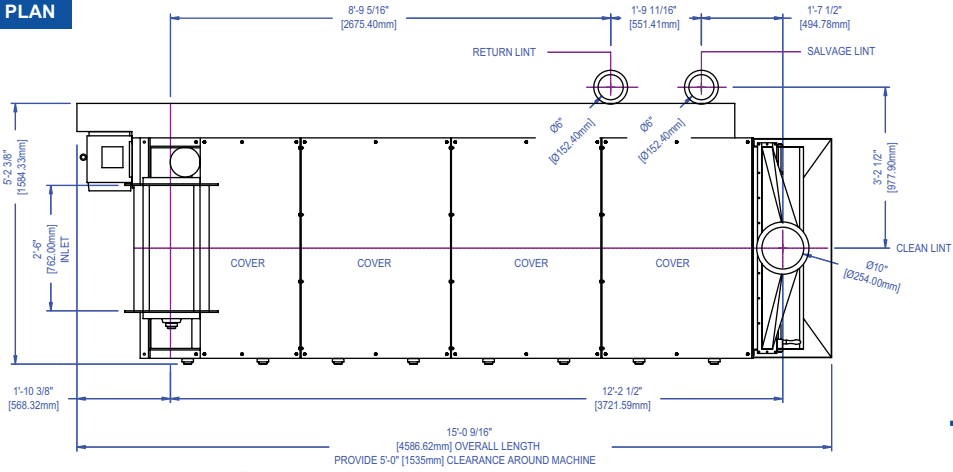
Total control of bran, meats and other oily by-products removed from lint stream.

Advanced powdered metal finish for easy clean-up and long lasting appeal.



SPECIFICATIONS: 7 STAGE LINT CLEANER

PLAN

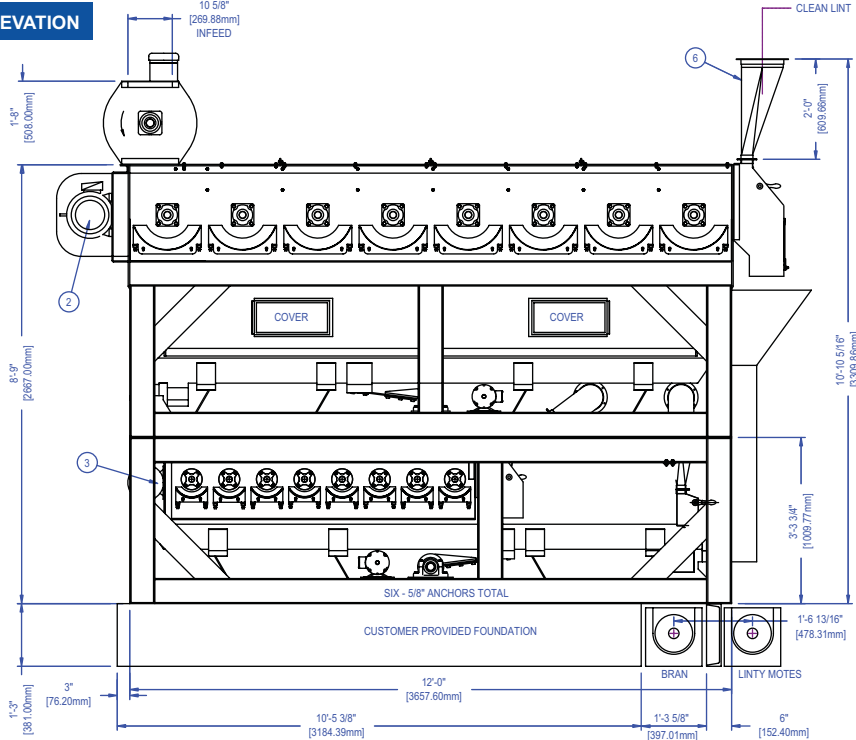


THE CANTRELL 7 STAGE LINT CLEANER WILL PROVIDE THE HIGHEST CAPACITY AND RECOVERY OF LINT ON THE MARKET TODAY, WHILE MAINTAINING THE HIGHEST LINT QUALITY AVAILABLE.

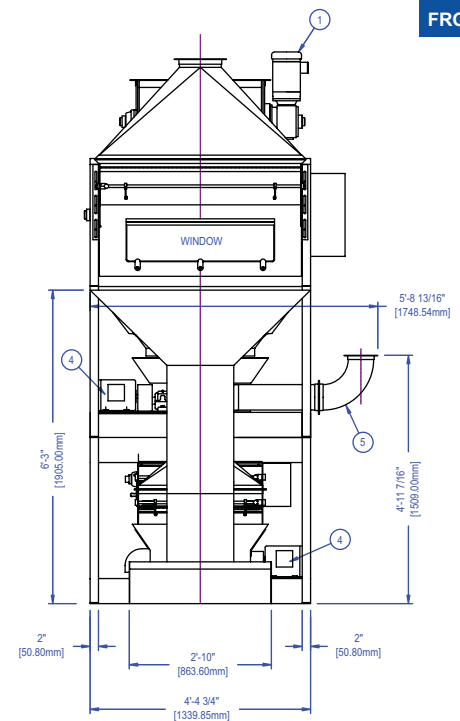
LAMINAR FLOW CLEANING GENTLY FLUFFS THE LINT WHILE REMOVING THE CONTAMINATES WITH LITTLE OR NO DAMAGE TO FIBER.

LARGE PEPPER AND BRAN SECTION ELIMINATES OIL, MEATS, AND HULL BRAN EARLY TO KEEP OIL ABSORPTION AND DISCOLORATION IN FINISHED LINT TO A MINIMUM.

ELEVATION



FRONT



1] FEEDER MOTOR - 1.5HP - 1450/1750RPM - 380/230-460V / 3PH / 50-60HZ

2] BEATER MOTOR - 7.5HP - 1000/1200RPM - 380/230-460V / 3PH / 50-60HZ

3] BEATER MOTOR - 3HP - 1450/1750RPM - 380/230-460V / 3PH / 50-60HZ

4] SHAKER MOTORS - (2) 1HP - 1000/1200RPM - 380/230-460V / 3PH / 50-60HZ

5] AIR HOODS - (2) 6" DIA. / 900 CFM EACH / 3819 FPM VELOCITY

6] AIR HOOD - 10" DIA. / 1600 CFM / 2934 FPM VELOCITY

7] CAPACITY 30,000 LBS / 13,610 KG PER 24 HOUR DAY

8] 48" (1219mm) WIDE CELLULOSE SEC. 30" (762mm) WIDE RECLAIM SEC.

9] SHIPPING WEIGHT: 11,800 LBS / 5,352 KG

10] SHIPPING VOLUME: 603 FT³ / 17 M³



CANTRELL
WORLDWIDE INC.

2154 CHENAULT DRIVE ● BUILDING A ● CARROLLTON ● TEXAS ● 75006
PHONE: 972-302-2557 ● FAX: 214-279-0855

WWW.CANTRELLWORLDWIDE.COM