

CANTRELL

WORLDWIDE INC.

2154 CHENAULT DRIVE • BUILDING A • CARROLLTON • TEXAS • 75006
PHONE: 972-302-2557 • FAX: 214-279-0855
WWW.CANTRELLWORLDWIDE.COM

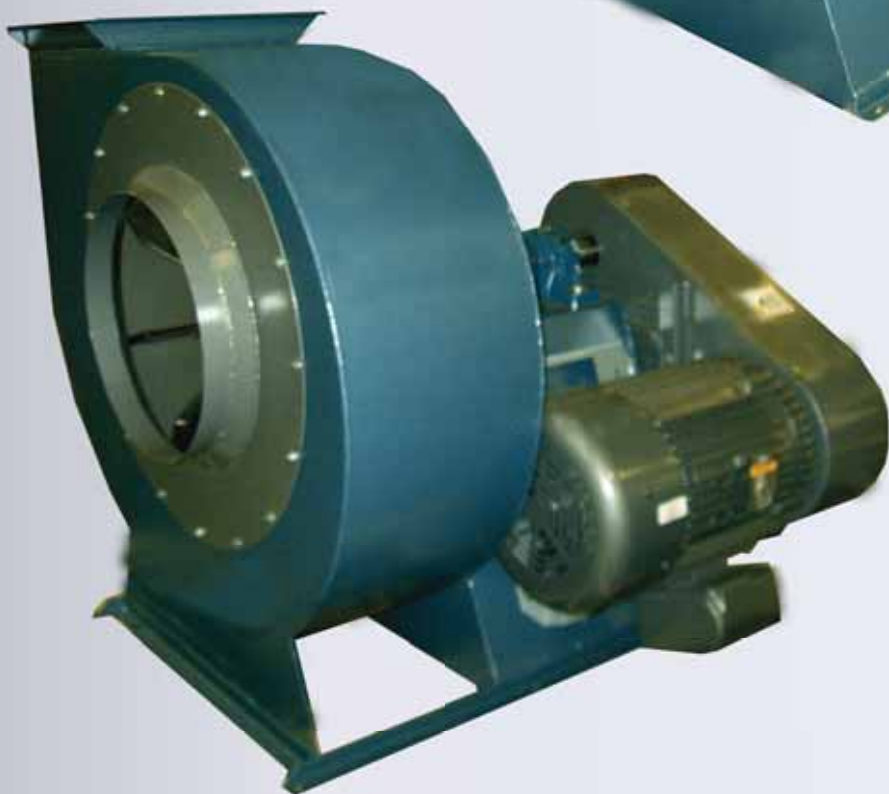
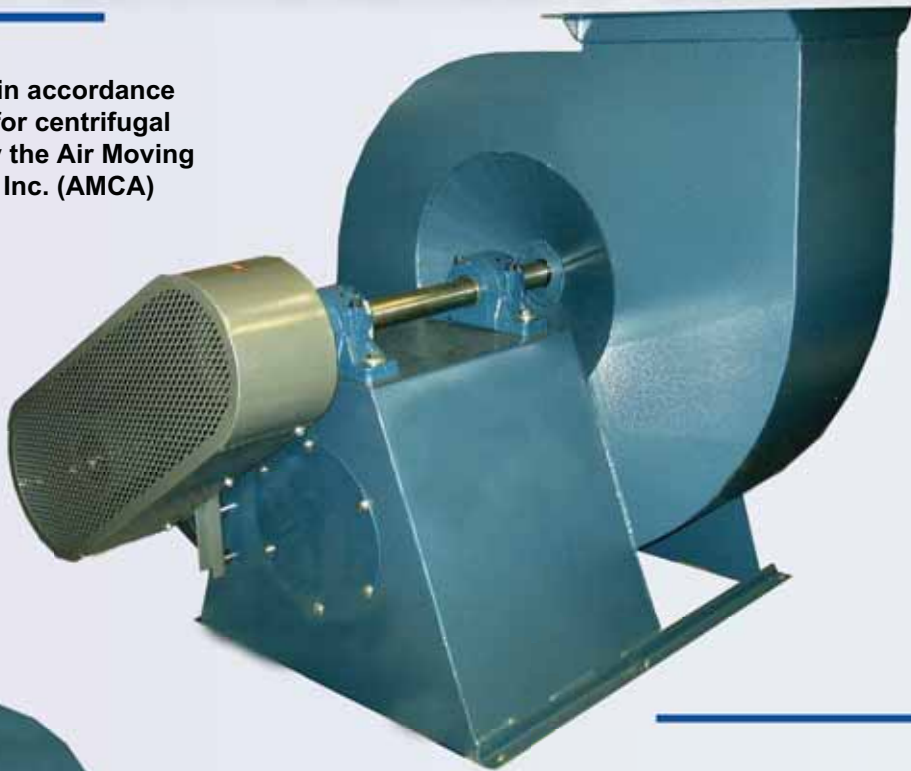
NEW...

HIGH EFFICIENCY FANS

Fan design has been tested in accordance with the standard test code for centrifugal and axial fans as adopted by the Air Moving & Conditioning Association, Inc. (AMCA)

Heavy duty, industrial grade, material wheel design.

Rugged double row spherical roller bearings insures long life and low maintenance.



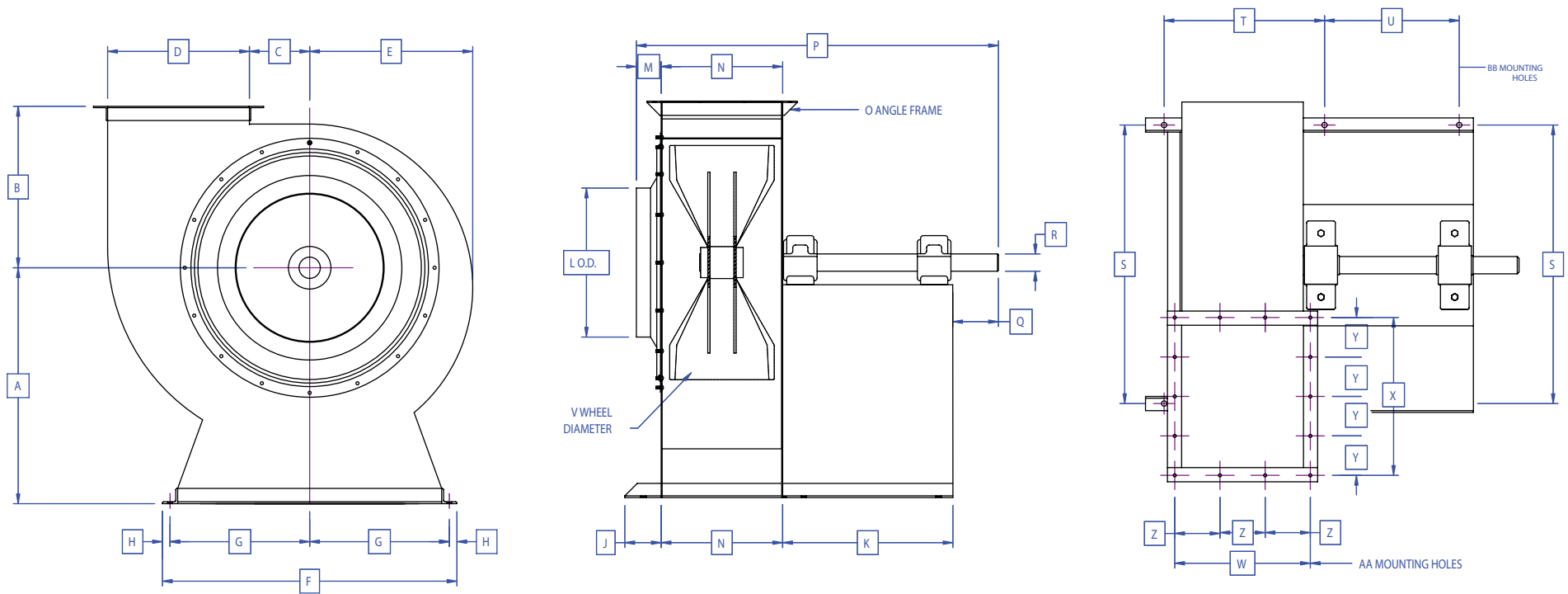
Unique design allows motor to be installed on inclined pedestal, eliminating the expense of remote motor base.

Precision turned ground and polished shaft aids in smooth well balanced performance.

Back cone, tapered inlet design and cupped blades enhance the static efficiency and reduce the losses for extra horsepower efficiency.

Comes in multiple sizes to fit your specific process requirement.

SPECIFICATIONS:



| SIZE | PART NO. | A | B | C | D | E | F | G | H | J | K | L | M | N | O \angle | P | Q | R | S | T | U | V | W | X | Y | Z | AA | BB |
|------|--------------|---------|--------|--------|--------|--------|--------|--------|-----|--------|--------|--------|-------|---------|--------------|----------|--------|-----------|--------|--------|----|---------|----------|---------|-----------------|-----------------|-------|------|
| 20 | OS-020801-01 | 17 1/8 | 12 1/4 | 4 1/4 | 8 1/2 | 11 1/4 | 22 3/4 | 10 5/8 | 3/4 | 4 5/16 | 17 1/4 | 9 1/2 | 3 1/8 | 7 11/16 | 1 1/2 X 1/8 | 33 5/8 | 5 9/16 | 17/16 0 | 21 1/4 | 12 3/4 | 13 | 18 1/4" | 8 7/8 | 9 7/8 | 2 TIMES 4 15/16 | 2 TIMES 4 7/16 | 7/16" | 1/2" |
| 25 | OS-020801-02 | 17 1/8 | 13 1/2 | 4 3/4 | 10 3/4 | 13 | 22 3/4 | 10 5/8 | 3/4 | 3 1/8 | 17 1/4 | 11 1/2 | 3 1/8 | 8 7/8 | 1 1/2 X 1/8 | 34 1/4 | 5 | 17/16 0 | 21 1/4 | 14 | 13 | 20" | 10 3/8 | 12 3/8 | 2 TIMES 6 3/16 | 2 TIMES 5 3/16 | 7/16" | 1/2" |
| 30 | OS-020801-03 | 23 3/16 | 15 | 5 1/2 | 12 3/4 | 14 3/4 | 29 | 13 3/4 | 3/4 | 4 1/4 | 19 1/2 | 13 1/2 | 3 3/8 | 11 1/4 | 1 1/2 X 1/8 | 39 | 5 | 11/16 0 | 27 1/2 | 16 5/8 | 15 | 22 1/4" | 12 3/4 | 14 7/16 | 3 TIMES 4 13/16 | 2 TIMES 6 3/8 | 7/16" | 1/2" |
| 35 | OS-020801-04 | 23 3/16 | 17 1/2 | 6 3/4 | 14 3/4 | 17 1/2 | 29 | 13 3/4 | 3/4 | 3 1/8 | 19 1/2 | 15 1/2 | 3 3/8 | 12 3/8 | 1 1/2 X 1/8 | 40 1/4 | 5 | 11/16 0 | 27 1/2 | 17 3/4 | 15 | 24 1/2" | 13 7/8 | 16 5/16 | 3 TIMES 5 7/16 | 3 TIMES 4 5/8 | 7/16" | 1/2" |
| 40 | OS-020801-05 | 28 1/4 | 19 3/4 | 7 1/2 | 16 1/2 | 19 1/2 | 34 1/4 | 16 3/8 | 3/4 | 4 1/2 | 21 1/2 | 17 1/2 | 3 1/4 | 13 7/8 | 1 1/2 X 3/16 | 44 11/16 | 5 3/4 | 2 3/16 0 | 32 3/4 | 19 1/8 | 17 | 27" | 15 15/16 | 18 3/4 | 3 TIMES 6 1/4 | 3 TIMES 5 5/16 | 7/16" | 1/2" |
| 45 | OS-020801-06 | 28 1/4 | 21 | 8 | 18 | 21 | 34 1/4 | 16 3/8 | 3/4 | 3 | 21 1/2 | 19 1/2 | 3 1/4 | 15 3/8 | 1 1/2 X 3/16 | 45 7/8 | 5 3/4 | 2 3/16 0 | 32 3/4 | 20 5/8 | 17 | 30" | 17 7/16 | 20 1/4 | 4 TIMES 5 1/16 | 3 TIMES 5 13/16 | 7/16" | 1/2" |
| 50 | OS-020801-07 | 33 1/4 | 22 3/4 | 8 1/2 | 20 | 23 | 38 1/4 | 18 1/8 | 1 | 5 1/8 | 24 | 21 1/2 | 3 1/2 | 17 1/8 | 2 X 3/16 | 51 1/16 | 6 7/16 | 2 7/16 0 | 36 1/4 | 22 5/8 | 19 | 33" | 19 1/8 | 22 1/4 | 4 TIMES 5 9/16 | 3 TIMES 6 3/8 | 7/16" | 3/4" |
| 55 | OS-020801-08 | 33 1/4 | 24 1/2 | 9 | 22 | 25 | 38 1/4 | 18 1/8 | 1 | 3 1/4 | 24 | 23 1/2 | 3 1/2 | 19 | 2 X 3/16 | 52 5/16 | 6 7/16 | 2 7/16 0 | 36 1/4 | 24 1/2 | 19 | 36 1/2" | 21 | 24 1/4 | 4 TIMES 6 1/16 | 4 TIMES 5 1/4 | 7/16" | 3/4" |
| 60 | OS-020801-09 | 36 1/4 | 26 1/2 | 10 1/4 | 24 | 27 1/4 | | | | 3 1/4 | 26 | 25 1/2 | 5 1/4 | 20 | 2 X 1/4 | 58 1/4 | 7 | 2 11/16 0 | | 28 1/2 | 20 | 40 1/4" | 22 | 26 1/4 | 5 TIMES 4 1/4 | 4 TIMES 5 1/2 | 7/16" | 3/4" |



CANTRELL
WORLDWIDE INC.

2154 CHENAULT DRIVE • BUILDING A • CARROLLTON • TEXAS • 75006
PHONE: 972-302-2557 • FAX: 214-279-0855

WWW.CANTRELLWORLDWIDE.COM