

CANTRELL

WORLDWIDE INC.

2154 CHENAULT DRIVE • BUILDING A • CARROLLTON • TEXAS • 75006
PHONE: 972-302-2557 • FAX: 214-279-0855
WWW.CANTRELLWORLDWIDE.COM

NEW...

200 SAW "HIGH PERFORMANCE" DELINTE

NO AIR IDLERS REQUIRED

POSITIVE MANUAL ADJUSTMENT OF SAW MOTOR DRIVE.

TWIN GRATEFALL CYLINDERS

ADD BALANCE TO OPENING AND SIT BACK OUT OF THE AISLE TO PREVENT DAMAGE.

BALL BEARING GRATEFALL PIVOTS

ELIMINATES GRATEFALL BUSHING MAINTENANCE.

MOTORS LOCATED FOR EASY ACCESS

*ALLOW FOR WELL VENTILLATED COOL
RUNNING.*



NEW DESIGN FLOAT CYLINDER

*RUGGED HIGH PERFORMANCE & LOW
MAINTENANCE.*

RUGGED ALUMINUM SAW PULLY

ALLOWS FOR EASY REMOVAL (28 LBS).

EXTENDED SEED CHARGING CHAMBER

*CREATES EXTRA DENSITY IN FLOAT
FOR A MORE UNIFORM LINT CUT
WITH NO SEED MESS.*

LOW PROFILE

*LOW CENTER OF GRAVITY MAKES
SMOOTH RUNNING AND EASY
TO REACH OPERATION &
MAINTENANCE.*

HEAVY GAUGE DRIVE GUARDS

WITH EASY ACCESS TO DRIVES.

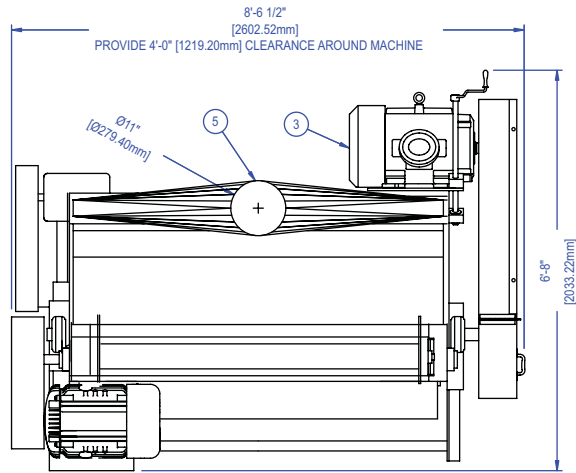
ADVANCED POWDERED METAL FINISH

*MAKES FOR EASY CLEAN-UP
AND LONG LASTING APPEAL.*



SPECIFICATIONS: 200 SAW DELINER

PLAN

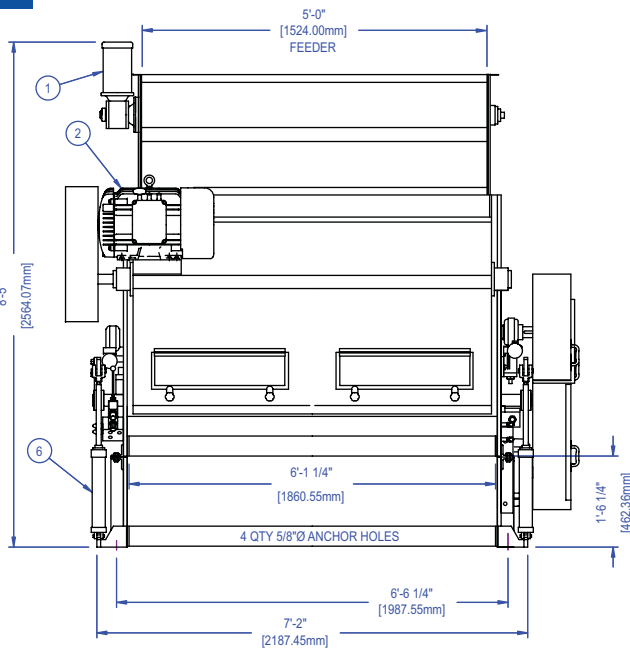


THE NEW CANTRELL 200 SAW DELINER COMBINES THE HIGHEST CAPACITY LINT REMOVAL WITH THE LOWEST MAINTENANCE REQUIRED FOR ANY DELINER ON THE MARKET TODAY.

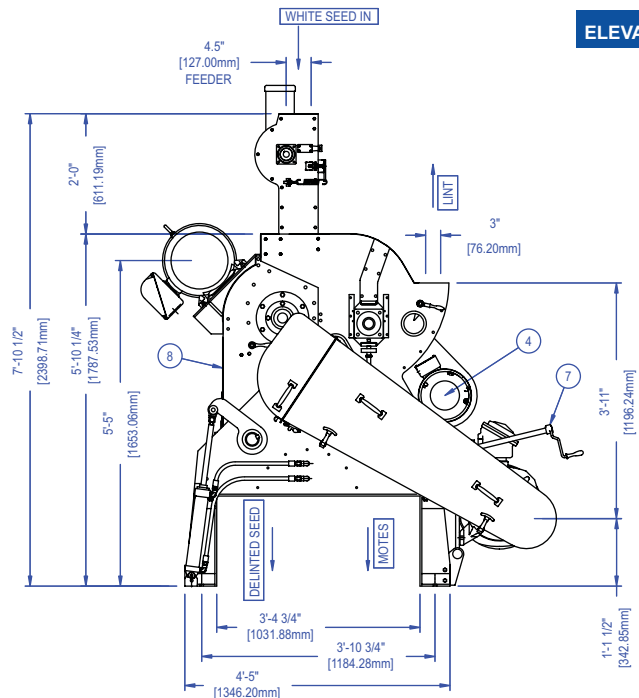
THE EXTREMELY LOW PROFILE MAKES FOR EASY ADJUSTMENTS WHILE ALLOWING FOR SMOOTH TROUBLE FREE OPERATION. MONITORING THE DELINERS' PERFORMANCE HAS NEVER BEEN EASIER WITH EXTRA LARGE INSPECTION WINDOWS AT THE MOST CRITICAL LOCATIONS.

HIGH PERFORMANCE, QUALITY LINT, RELIABILITY AND SAFETY ARE THE BEST REASONS FOR PURCHASING THIS

FRONT



ELEVATION



1] FEEDER MOTOR - .5HP - 1750RPM - 90V DC

2] FLOAT MOTOR - 25HP - 1450/1750RPM - 380/230-460V / 3PH / 50-60HZ

3] SAW MOTOR - 40HP - 1450/1750RPM - 380/230-460V / 3PH / 50-60HZ

4] BRUSH MOTOR - 3HP - 1000/1200RPM - 380/230-460V / 3PH / 50-60HZ

5] LINT AIR HOOD - 11" DIA. / 2200 CFM / 3340 FPM VELOCITY

6] DUAL GRATEFALL ASSIST HYDRAULIC CYLINDERS (950 PSI)

7] POSITIVE MECHANICAL BELT TENSIONING

8] 200 - 18" DIA. X .045" SAWS ON 7 15/16" DIA. CYLINDER

9] SHIPPING WEIGHT: 6800 LBS / 3084 KG

10] SHIPPING VOLUME: 477 FT³ / 13.59 M³



CANTRELL
WORLDWIDE INC.

2154 CHENAULT DRIVE ● BUILDING A ● CARROLLTON ● TEXAS ● 75006
PHONE: 972-302-2557 ● FAX: 214-279-0855

WWW.CANTRELLWORLDWIDE.COM