

CANTRELL

WORLDWIDE INC.

2154 CHENAULT DRIVE ● BUILDING A ● CARROLLTON ● TEXAS ● 75006

PHONE: 972-302-2557 ● FAX: 214-279-0855

WWW.CANTRELLWORLDWIDE.COM

NEW...

60" BEATER / SEPARATOR

The most efficient primary removal of hulls from oil bearing seeds on the market today.

The Beater Separator combines mechanical and pneumatic forces to effectively remove hulls from decorticated oil bearing seeds, including cottonseed, sunflower, soybeans, peanuts, etc.

Solidly designed and built for most generic hullers to be mounted over the frame.



Features include;

Self cleaning aluminum sash for level consistent results.

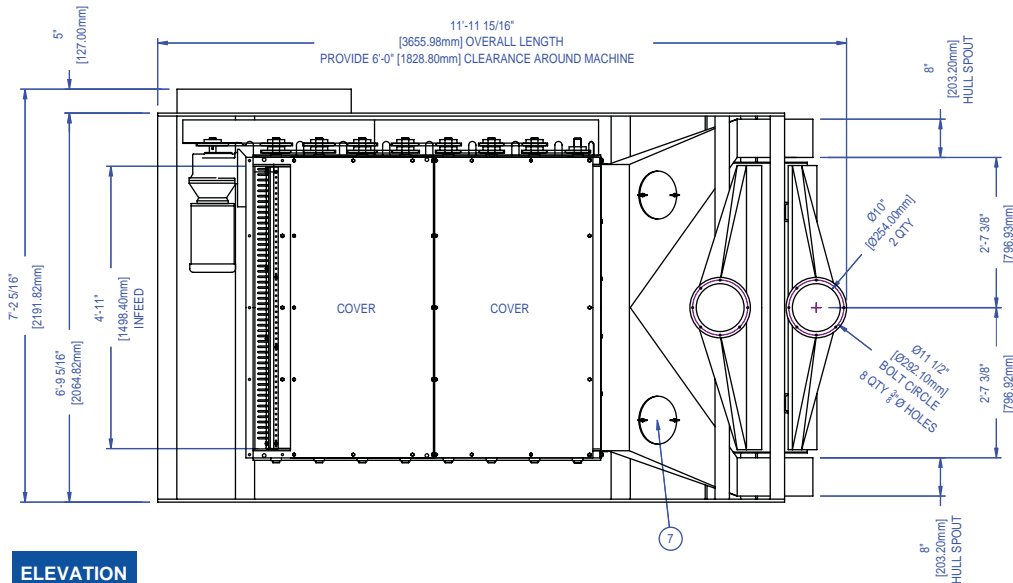
Extra heavy duty eccentrics for smooth operation and long life.



Beater screens mounted in easy-pull trays for quick change and ease of maintenance.

SPECIFICATIONS: 60" BEATER / SEPARATOR

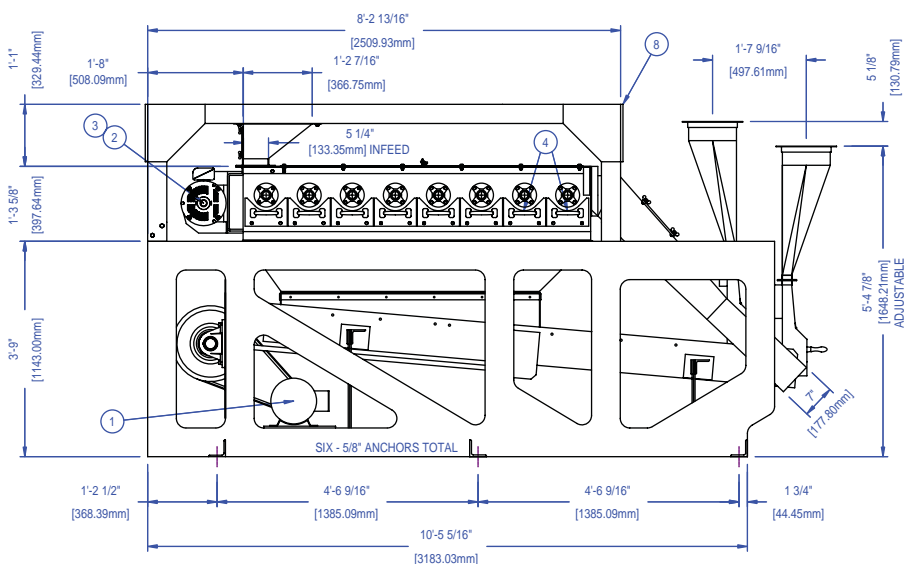
PLAN



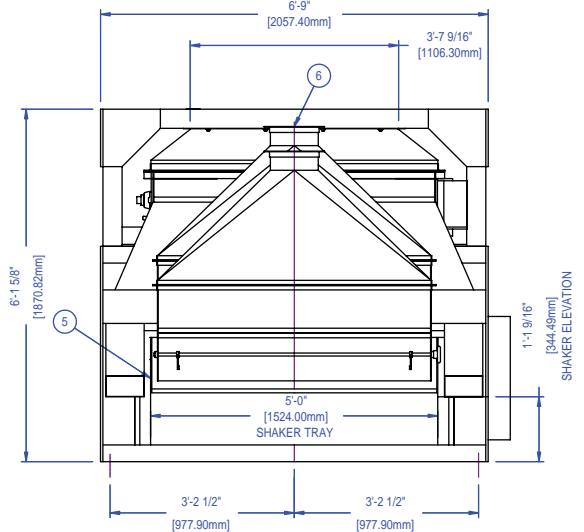
THE CANTRELL BEATER / SHAKER IS PRIMARY TO PRODUCE HULLS WITH A MINIMUM OIL CONTENT BY EFFICIENTLY BEATING THE HULLS TO REMOVE THE HIGH PROTEIN FINISHED MEATS.

THE MACHINE CONSISTS OF AN EIGHT-CHAMBER BEATER SECTION MOUNTED ABOVE A SHAKER SEPARATOR TRAY.

ELEVATION



FRONT



1] SHAKER MOTOR - 3HP - 1000/1200RPM - 380/230-460V / 3PH / 50-60HZ

2] BEATER MOTOR - 5HP - 1450/1750RPM - 380/230-460V / 3PH / 50-60HZ

3] GEAR REDUCER, DOUBLE REDUCTION / HELICAL GEAR 9.3:1

4] 60" EIGHT STATIONARY SCREENS - REMOVABLE

5] SHAKER TRAY - 42.5 SQFT OF SELF CLEANING SASH

6] ADJUSTABLE AIR HOODS - TWO 10" DIA. / 1900 CFM EA. / 3484

7] INSPECTION WINDOWS - 2 LARGE 10" DIA. VIEWING AREAS

8] UNIVERSAL HULLER STAND / FITS ALL MAKES AND MODELS

9] SHIPPING WEIGHT: 5400 LBS / 2448 KG

10] SHIPPING VOLUME: 512 FT³ / 14.5 M³



2154 CHENAULT DRIVE ● BUILDING A ● CARROLLTON ● TEXAS ● 75006
PHONE: 972-302-2557 ● FAX: 214-279-0855

WWW.CANTRELLWORLDWIDE.COM